

Access Statement

Uttoxeter Racecourse

Contact Information

For those wishing to contact Caravan and Motorhome Club by phone, ~~typetalk~~ calls can be made to ~~sites~~, and for members only to the Contact Centre on 01342 327490. The Caravan and Motorhome Club's website has been designed with accessibility in mind, and includes keyboard navigation and Browsealoud texthelp. The Website complies with the W3C level A guidelines.

Site

01889 598900

Arrival and Car Parking Facilities

The site is entered through Uttoxeter Racecourse, ~~there is no barrier at the site entrance~~. There is space in the forecourt in front of reception for new arrivals and visitors to park. The sign is at a low level and may be obscured by parked vehicles. There are no designated accessible bays in the car park however there is space for accessible parking. The surface of car parking area is compacted crushed stone. The access route to reception is across the compacted crushed stone surface and then a path of concrete paving slabs. The route is level and of adequate width for a wheelchair user with no obstructions.

main entrance which is the second entrance off wood lane.
Height barriers are in operation but security will be onsite at
all times to grant access to customers who are booked in

Reception

The reception is clearly evident on entry to the site. The entrance has a step of 170mm and there is no handrail. The entrance door is narrow with a clear opening width of 650mm. The call bell at the side of the door is difficult to see and is mounted at 1830mm from floor level. The internal space is very restricted and it would be difficult for a wheelchair user to manoeuvre. No seating is provided. The reception desk/counter is 950mm high, and has no knee space. There is no hearing induction system to assist hearing aid users.

Pitches 70

There are ~~72~~ pitches on the site; none of them are permanently designated for people with disabilities. Allocation of pitches is flexible on request and subject to availability. Two hard standing pitches are ~~available~~. No roll-out mats are available. 4 grass pitches are appropriate for accessible use, located 40m from the accessible toilet facilities or the main toilet block. The nearest accessible pitch is about 100m from reception. The site is generally level with some slight undulation on the grass surfaces.

~~prioritised for those with accessible needs (subject to availability), please call to reserve one.~~

Circulation around the Site

The drive around the site is of crushed stone, generally level but uneven in places. The surface of paving around the reception, facilities block and service points is concrete slabs; these are a little uneven in places creating potential trip hazards. Signage around the site is minimal but generally to CC standard with good contrast and size.

Toilet Block

There is 1 toilet block about 100m from reception and adjacent to the entrance forecourt. Accessible facilities are provided in a freestanding unit adjacent to the main toilet block. There is

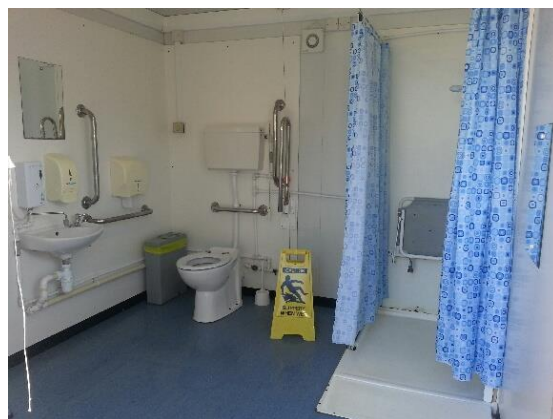
parking provision adjacent to the main toilet block. There is parking provision within 15m of the accessible facilities.

There are separate entrances to the **male and female toilets** which are accessed using a Yale key; the latch is a little difficult to operate from inside. The doors open inwards and are easy to open; neither of them have vision panels. The male entrance door has a 700mm effective clear opening and an 80mm stepped threshold. The female entrance has a 750mm effective clear opening and a 110mm stepped threshold. Neither door is fitted with a grab handle.

The **male toilet facilities** include a slab urinal, flush with the floor and no grab rails or privacy screens. 5 WC cubicles with inward opening doors; 1 cubicle has grab rails for ambulant disabled people. Door locks are small and difficult to operate by people with limited manual dexterity. 5 washbasins with push taps; no grab rails are fitted. 2 privacy cubicles, neither having grab rails and both fitted with push taps. 4 shower cubicles have inward opening doors and 170mm recessed trays. 1 cubicle is fitted with grab rails for ambulant disabled people. The shower controls are 1600mm from the shower floor level.

Female toilet facilities comprise of 6 operational WC cubicles with inward opening doors; one cubicle has grab rails for ambulant disabled people. 4 washbasins have push taps but no grab rails. 2 privacy cubicles each have push taps with no grab rails fitted to either. 6 shower cubicles have inward opening doors and 170mm recessed trays. 2 cubicles are fitted with grab rails for ambulant disabled people. The shower controls are 1600mm from the shower floor level. A baby change cubicle is provided but this has no accessible features.

The **combined WC and shower** is a purpose built stand-alone unit sited close to the main toilet block. The unit has a RADAR lock with a key which can be obtained from reception. Access is via a wide shallow ramp from the concrete paving that also serves the main toilet block. The door opens outwards however it is rather heavy to open. The clear opening width of the entrance is 830mm. There is good visual contrast to the door furniture and an external emergency release to the lock. There is good space within the unit for circulation in a wheelchair. The WC is for right hand transfer. The shower is difficult to access as it is in a narrow cubicle and has a shallow ramped entrance; it is fitted with a drop-down seat. A grab rail is fitted and the shower height is flexible with good accessible controls. While the layout is in principle to current design guidance there are a number of shortcomings in detail each of which may affect its use dependant on a user's specific needs. There is one emergency alarm call accessible from the WC, the reset button is at low level by the door. The alarm activates an external light and low volume siren.



Other facilities

A combined **information room, laundry, dishwashing area** is located adjacent to the toilet block. Parking is available within 15m. Pedestrian route and access is all as for the toilet block. There is a large step of 230mm up into the room and there is no grab handle fitted. Space is rather limited.

Information room shelves and display units are at accessible heights.

The **Dishwashing area** has two sinks at 920mm high with screw-top taps.

The **Laundry** has one sink at 940mm high with screw-top taps and front-loading washer and dryer, coin operated with slots at 1060mm high.

Service Points - Drinking water and waste water disposal is available at the toilet block. These have gullies raised 150mm from the floor. The lip to the chemical closet emptying point is 600mm from the floor making emptying difficult for people with mobility impairments. Motor home emptying points are available just outside the site entrance.